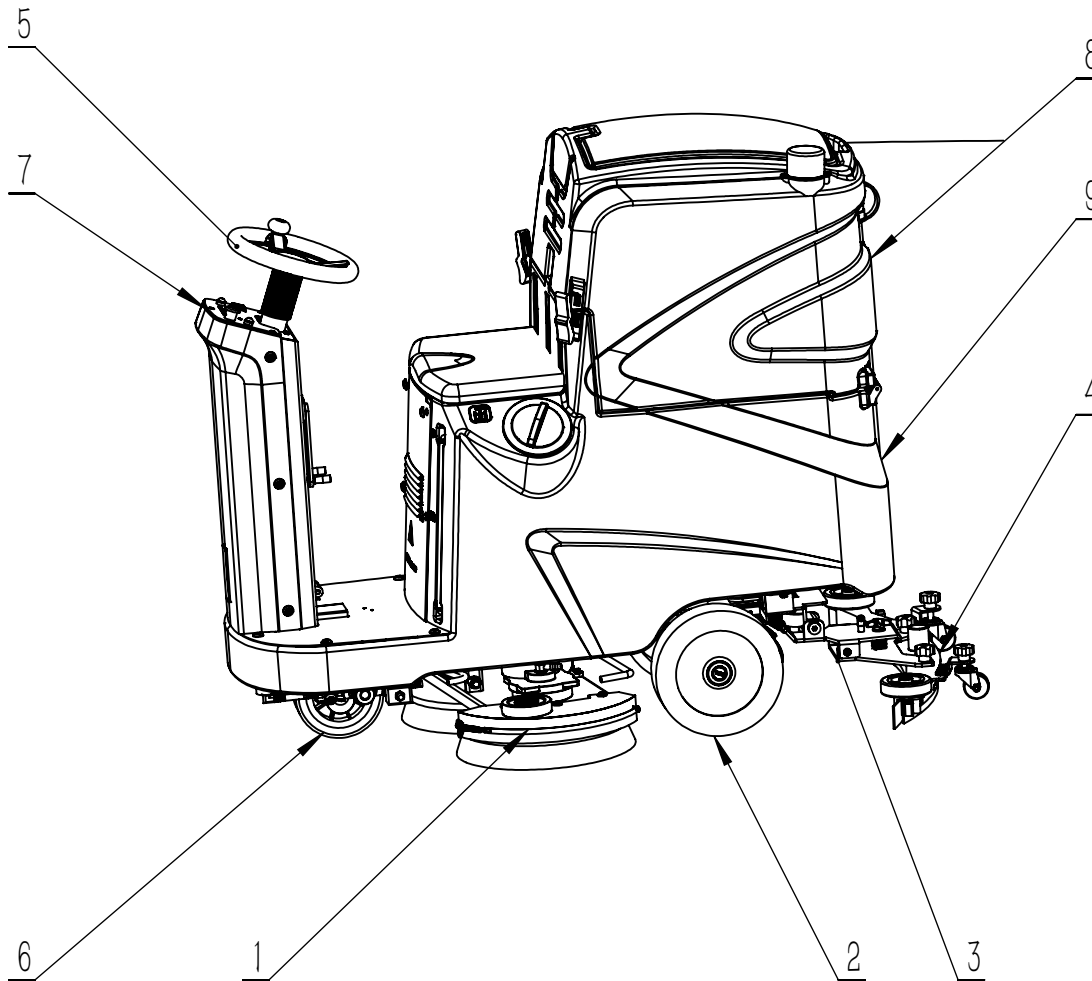




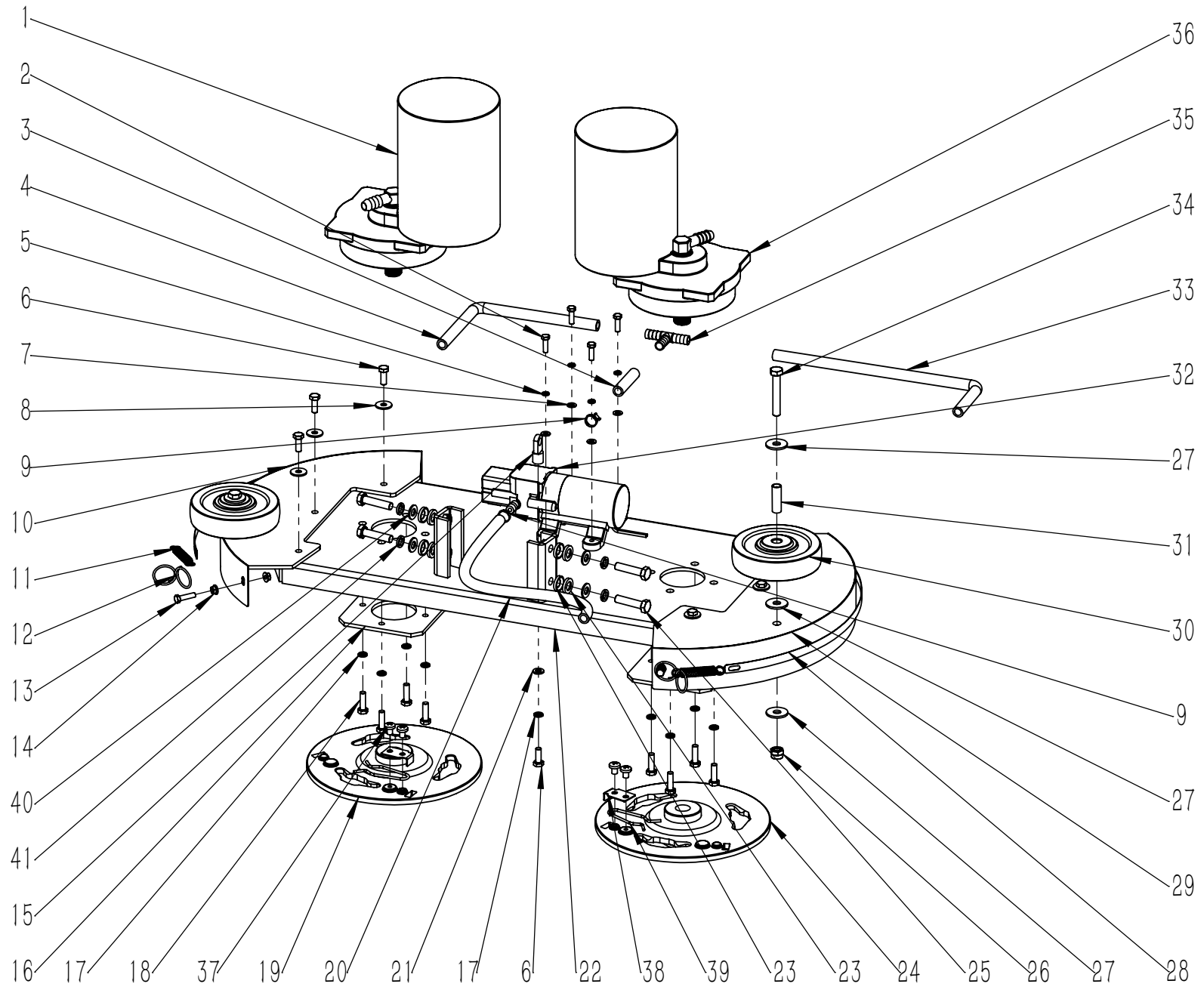
— **SCHEMATIC DRAWINGS** —

2640-0224

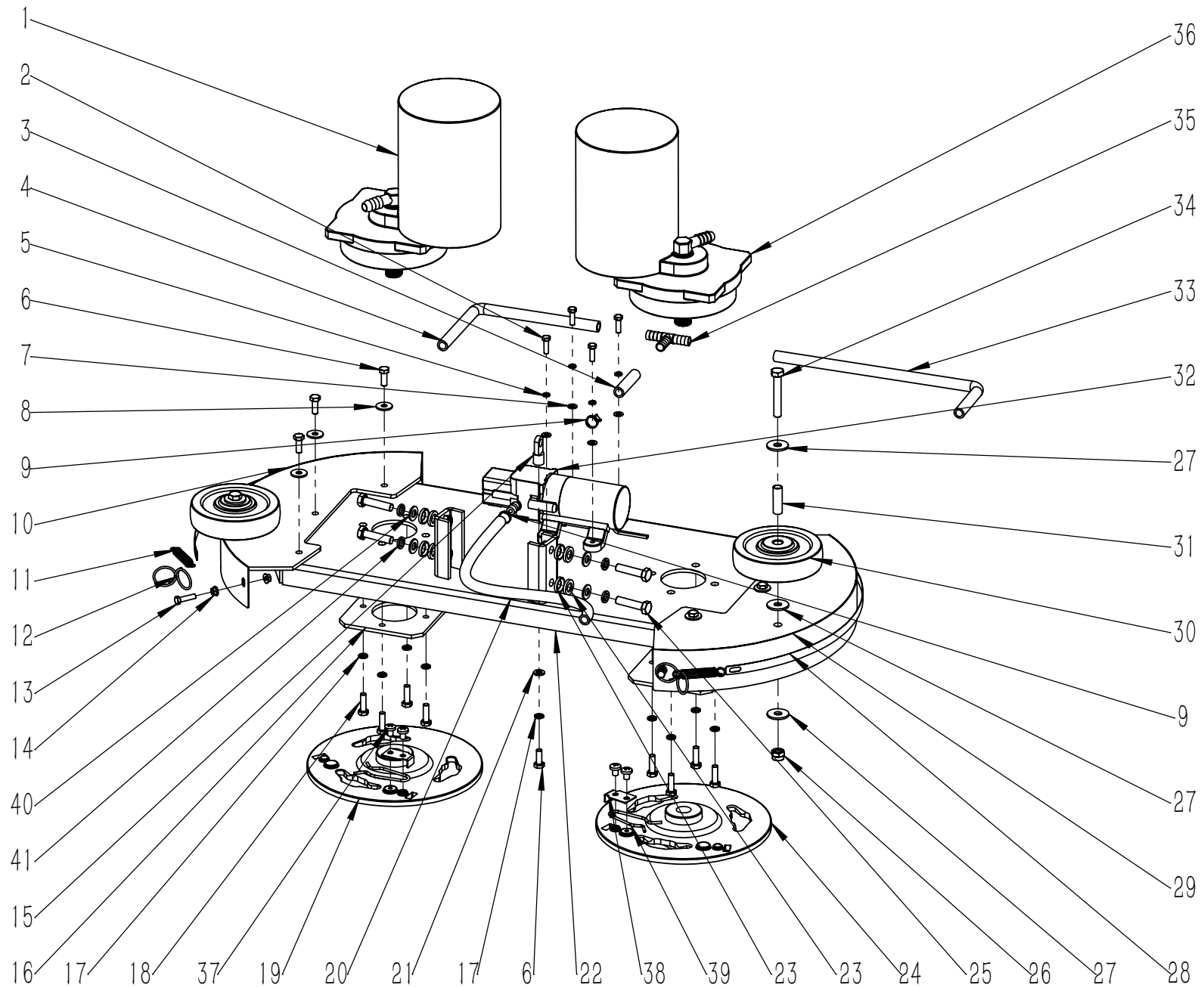
Scrubber Dryer T90/70R



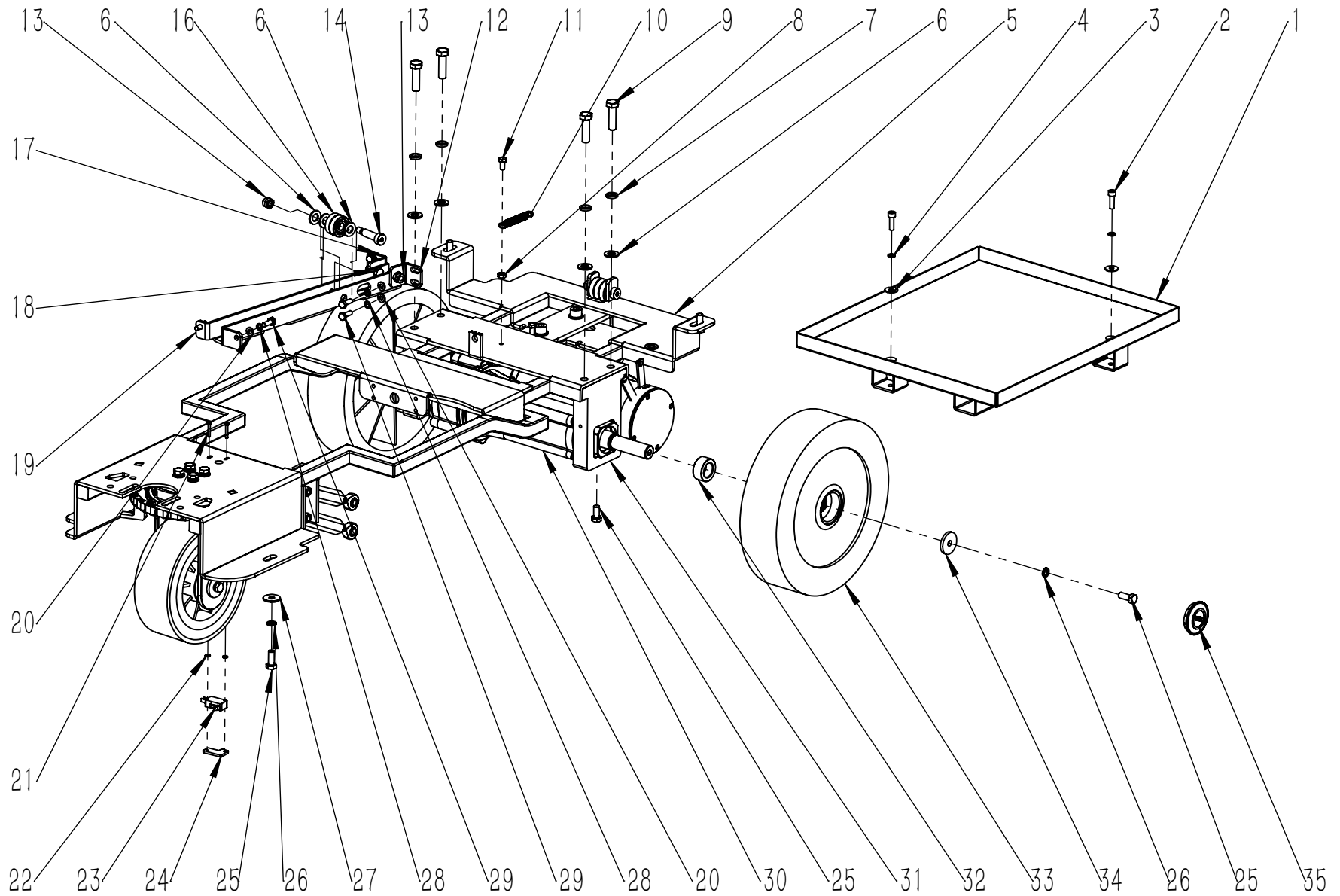
1. NOSE ASSEMBLY.....	1—4
2. FRAME ASSEMBLY.....	5—10
3. SQUEEGEE CONTROL ASSEMBLY.....	11—12
4. SQUEEGEE ASSEMBLY.....	13—14
5. DIVERSION ASSEMBLY.....	15—20
6. DRIVE ASSEMBLY.....	21—22
7. CONTROLLER ASSEMBLY.....	23—24
8. RECOVERY TANK ASSEMBLY.....	25—28
9. WATER TANK ASSEMBLY.....	29—34
10. ACCESSORIES.....	35—36



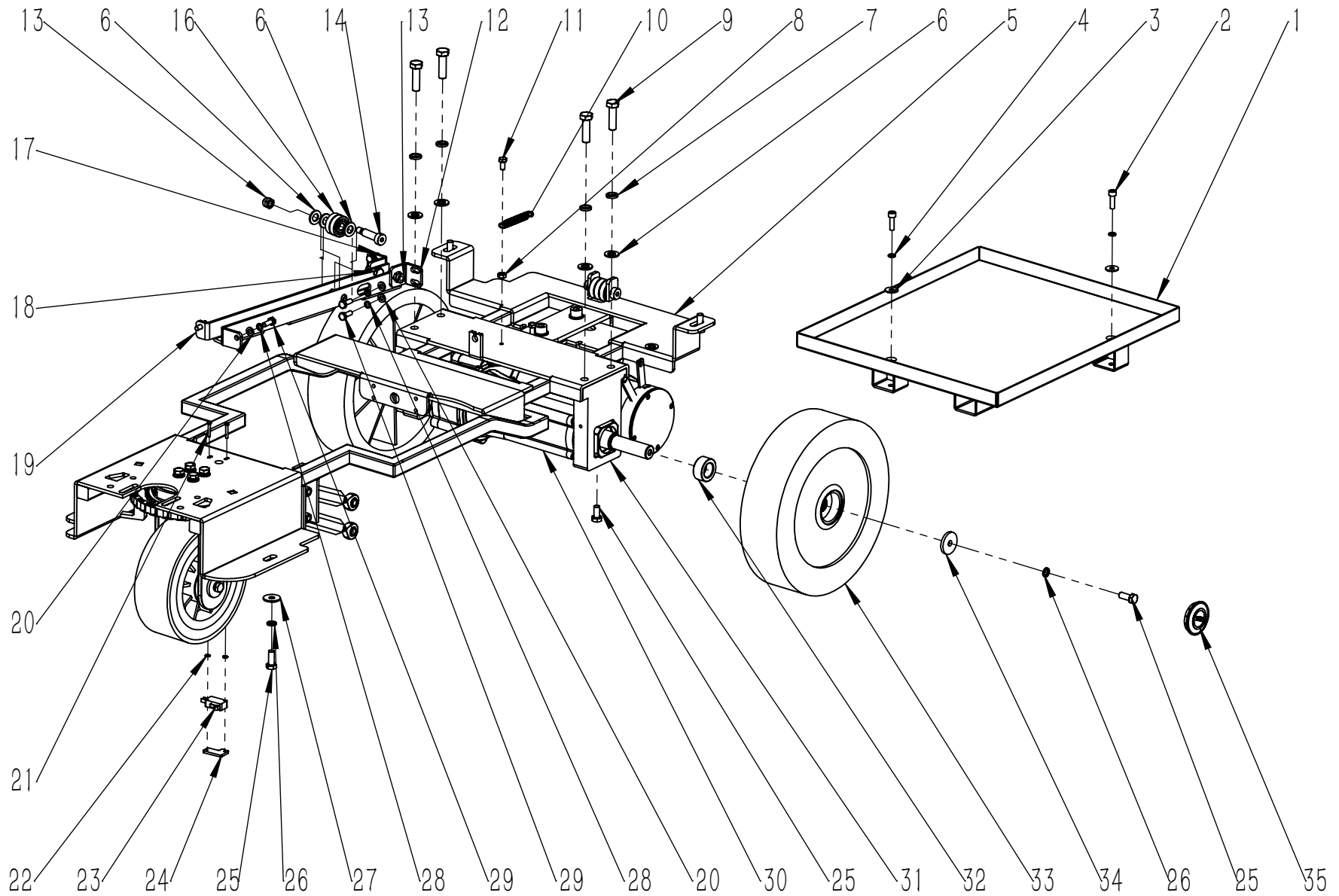
ITEM	P/N	QTY	DESCRIPTION
1	E040094-L	1	LEFT BRUSH MOTOR 24V 400W
2	N010029	4	SCREW M5x16 A2
3	F050088.8	1	SILICONE HOSE D=12 d=8 L=50
4	F050088.10	1	SILICONE HOSE D=12 d=8 L=250
5	N040023	4	LOCK WASHER M5
6	N010005	7	SCREW M6x16 ZINC
7	N030016	4	WASHER 5x10x1
8	N030008	6	WASHER 6x18x1.6 ZINC
9	F050003	2	SCREW CLAMP Φ 10-16
10	A040095	1	HEAD COVER RIGHT T90
11	B060012	2	SPRING 1.1x10x55
12	B070010	2	RING 2x26
13	N010135	4	SCREW M5x20 A2
14	N020049	8	NUT M5 A2
15	N060015	1	COUPLNG M6
16	A040065	2	MOTOR PLATE
17	N040001	9	LOCK WASHER M6 ZINC
18	N010006	8	SCREW M6x20 ZINC
19	D010030	1	BRUSH PLATE-LEFT T90
20	F050088.12	1	SILICONE HOSE D=12 d=8 L=380
21	N030007	1	WASHER 6x12x1.6 ZINC
22	A040101	1	MOTOR SUPPORT T90 DOUBLE MOTOR
23	N030072	8	M8 TAPERED WASHER GB850 ZINC
24	D010043	1	BRUSH PLATE-RIGHT T90
25	N010008	4	SCREW M8x35 ZINC
26	N020024	2	LOCK NUT M8 A2
27	N030028	6	WASHER 8x24x2 A2
28	A040102	2	BLADE 10x340MM
29	A040094	1	HEAD COVER LEFT T90
30	N110019	2	WHEEL Φ 100x29.5



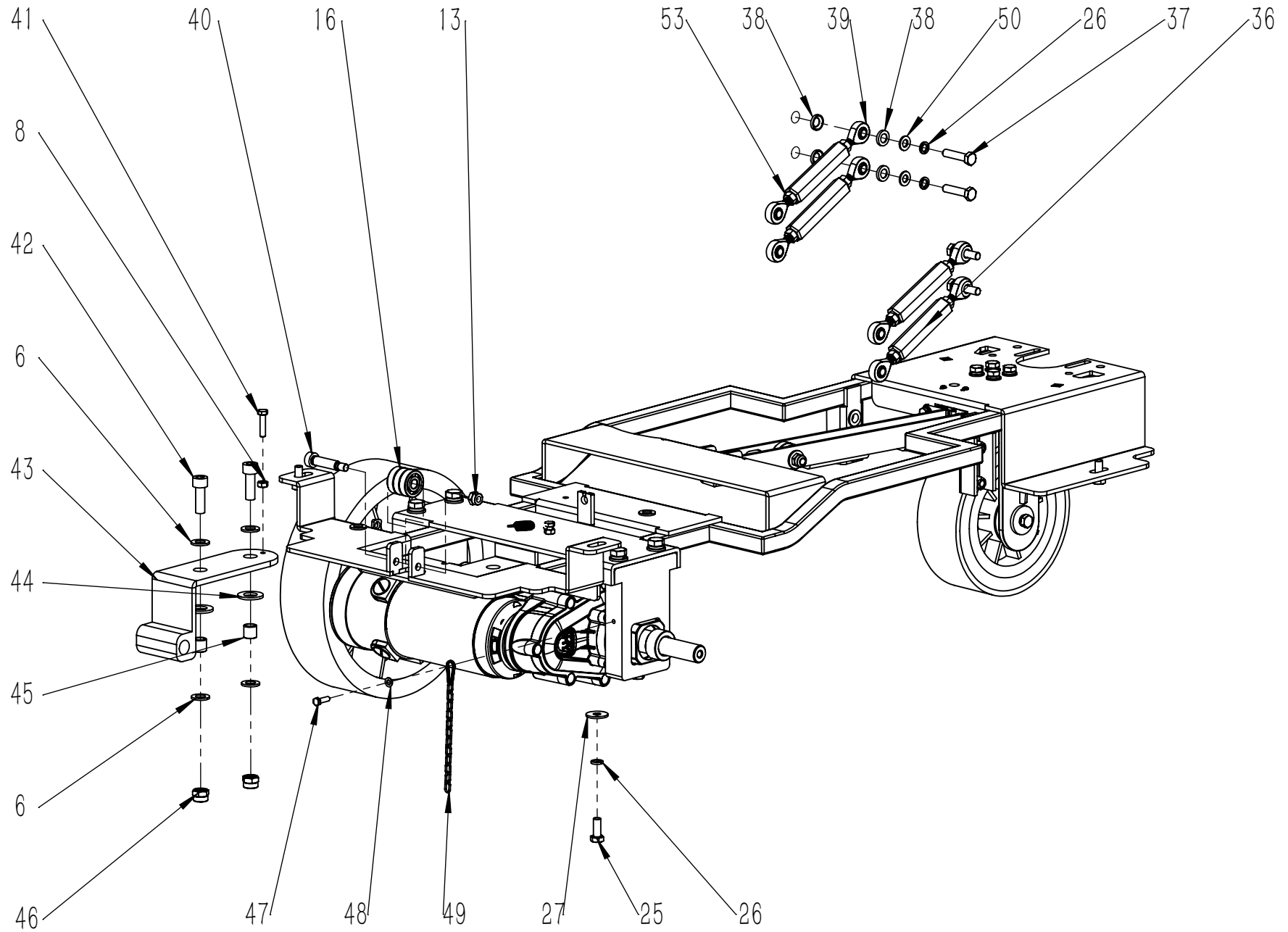
ITEM	P/N	QTY	DESCRIPTION
31	B020027	2	BUSHING 8x10x31
32	F010005	1	MICRO WATER PUMP 24V
33	F050088.6	1	SILICONE HOSE D=12 d=8 L=310
34	N010144	2	SCREW M8x50 A2
35	F020012	1	CONNECTOR D=10 d=8
36	E040094	1	RIGHT BRUSH MOTOR 24V 400W
37	N010179	4	SCREW M5x8 A2
38	A040060	2	SPRING LOCKING PLATE
39	B060122	2	LOCKING SPRING Φ 2
40	N030006	4	WASHER 8x16x1.6 ZINC
41	N040013	4	LOCK WASHER M8 ZINC



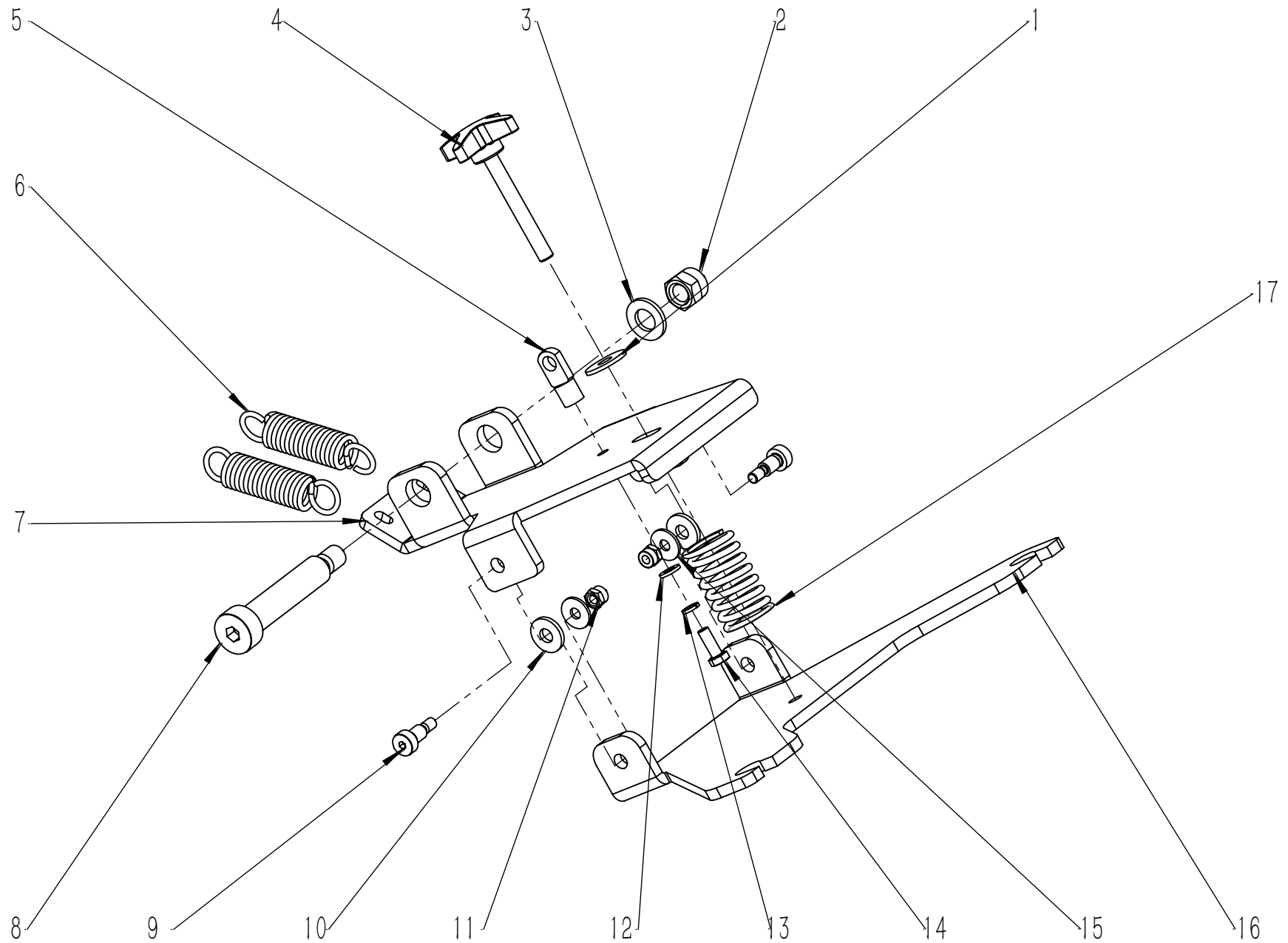
ITEM	P/N	QTY	DESCRIPTION
1	A030040	1	BATTERY BASE 360x416
2	N010057	2	SCREW M6x20 A2
3	N030022	2	WASHER 6x18x1.6 A2
4	N040011	2	LOCK WASHER M6 A2
5	A030101	1	DOUBLE BRUSH BASE FRAM T90
6	N030004	11	WAHSE 10x20x2 ZINC
7	N040003	4	LOCK WASHER M10 ZINC
8	N020005	2	NUT M6 A2
9	N010081	4	SCREW M10x35 ZINC
10	B060012	1	SPRING 1.1x10x55
11	N010145	1	SCREW M6x12 A2
12	A040100	1	SUPPORT RAIL LEFT MOUNTING BRACKET T90
13	N020001	4	LOCK NUT M8 ZINC
14	N010305	1	SHOULDER BOLT D10x30xM8 DACROMET
16	N070009	5	BEARING 6200
17	A050079	1	SUPPORT RAIL RINGHT MOUNTING BRACKET T90
18	N010121	2	SCREW M8x16 ZINC
19	A040099	1	HEAD CABLE SUPPORT RAIL T90
20	N030007	6	WASHER 6x12x1.6 ZINC
21	N010071	2	SCREW M3x20 ZINC
22	N030019	4	WASHER 3x7x0.5 A2
23	E020029	1	MICROSWITCH 250V 16A NORMALLY SWITCH ON
24	A020018	1	SUPPORT RIGHT
25	N010034	8	SCREW M8x20 ZINC
26	N040013	10	LOCK WASHER M8 ZINC
27	N030027	4	WASHER 8x24x2 ZINC
28	N040001	6	LOCK WASHER M6 ZINC
29	N010005	6	SCREW M6x16 ZINC
30	E040144	1	DRIVE MOTOR 24V300 HENGYE



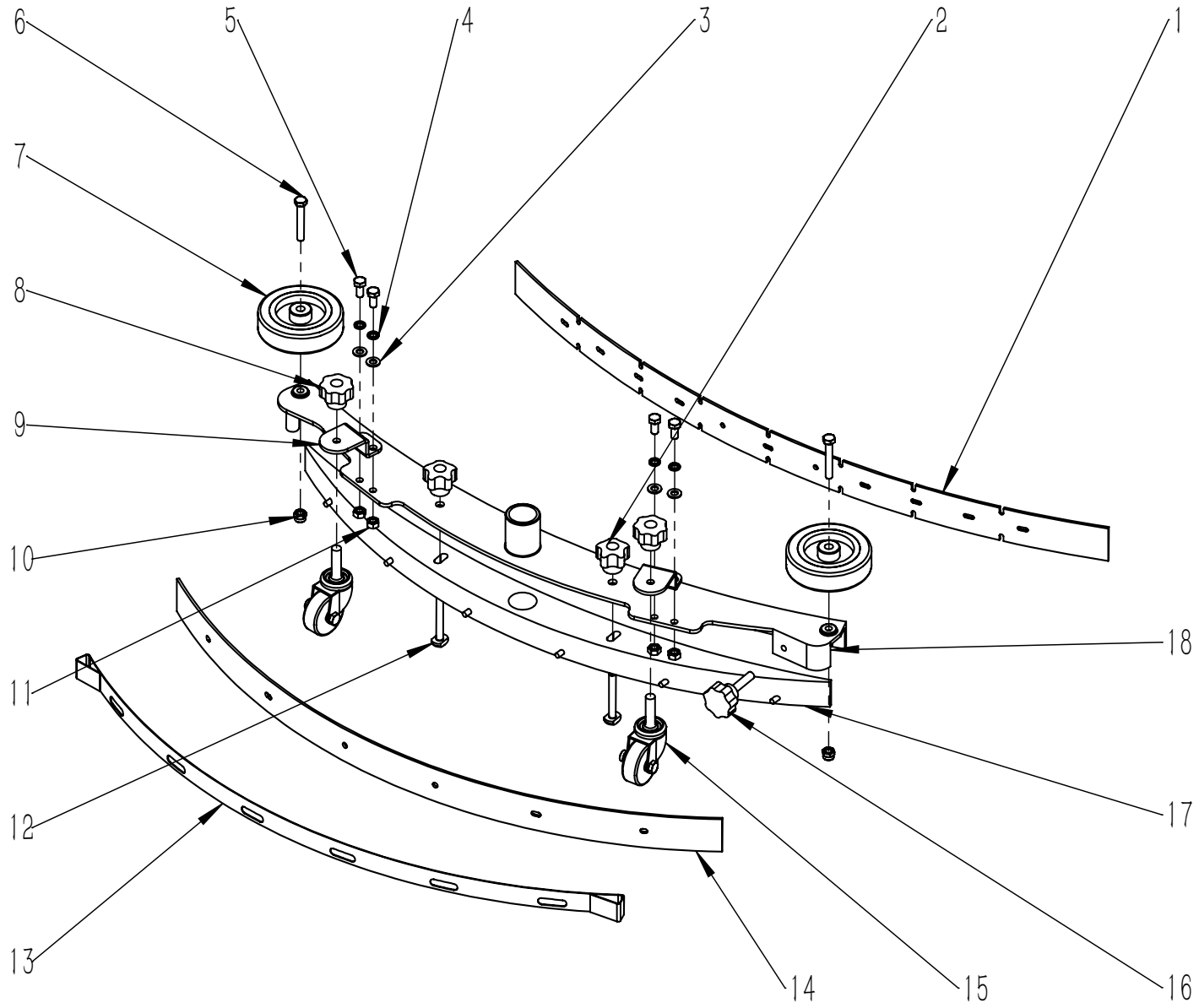
ITEM	P/N	QTY	DESCRIPTION
31	B050067	2	REAR DRIVE MOUNT T90
32	B050066	2	SPACER T90 INTEGRATED SHAFT
33	N110016	2	DRIVING WHEEL 225x65
34	B060069	2	WASHER 8.5x30x4 ZINC
35	C020003	2	COVER ϕ 42



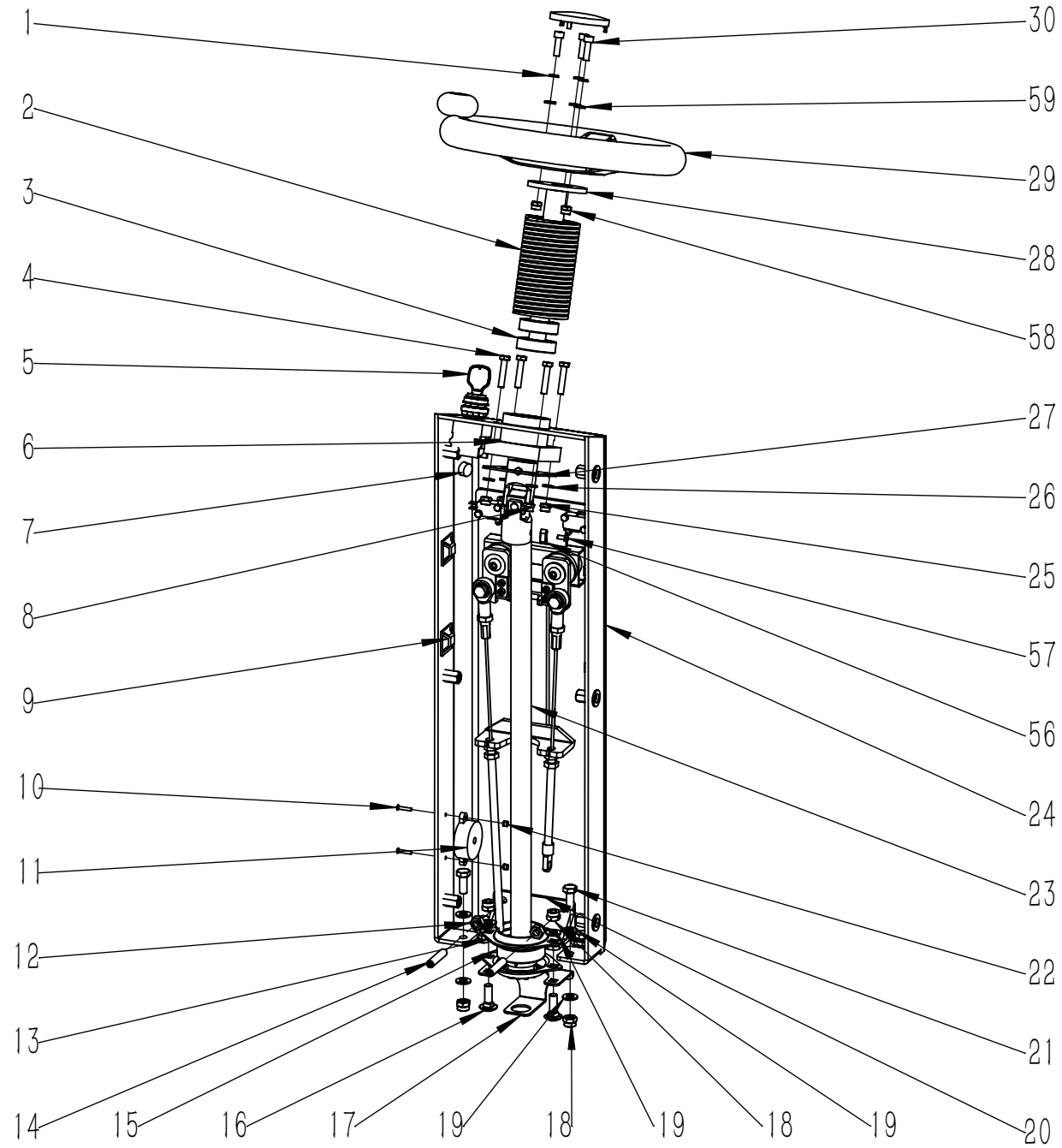
ITEM	P/N	QTY	DESCRIPTION
36	A020057	4	PULL ARM L=90MM
37	N010008	4	SCREW M8x35 ZINC
38	N030072	8	M8 TAPERED WASHER GB850 ZINC
39	N070023	8	FISHEYE JOINT BEARING SA8T
40	N010259	1	SCREW D10x35xM8 DACROMET
41	N010106	1	SCREW M6x25 A2
42	N010063	2	SCREW M10x30 ZINC
43	A050070	1	STEAK HEAD CONNECTION BRACKET T90
44	N030055	2	WAHSE 14X28X2.5 ZINC
45	B020037	2	BUSHING D10xD14X13.5
46	N020002	2	LOCK NUT M10 ZINC
47	N010025	1	SCREW M5x16 ZINC
48	N030031	1	WASHER 5x10x1 ZINC
49	N100040	1	ANTI-STATIC CHAIN L=150MM
50	N030006	4	WASHER 8x16x1.6 ZINC
51	N100051	1	CHAIN 06B-1-24 T90
52	N100021	2	JOINT CHAIN
53	N020018	8	NUT M8 ZINC



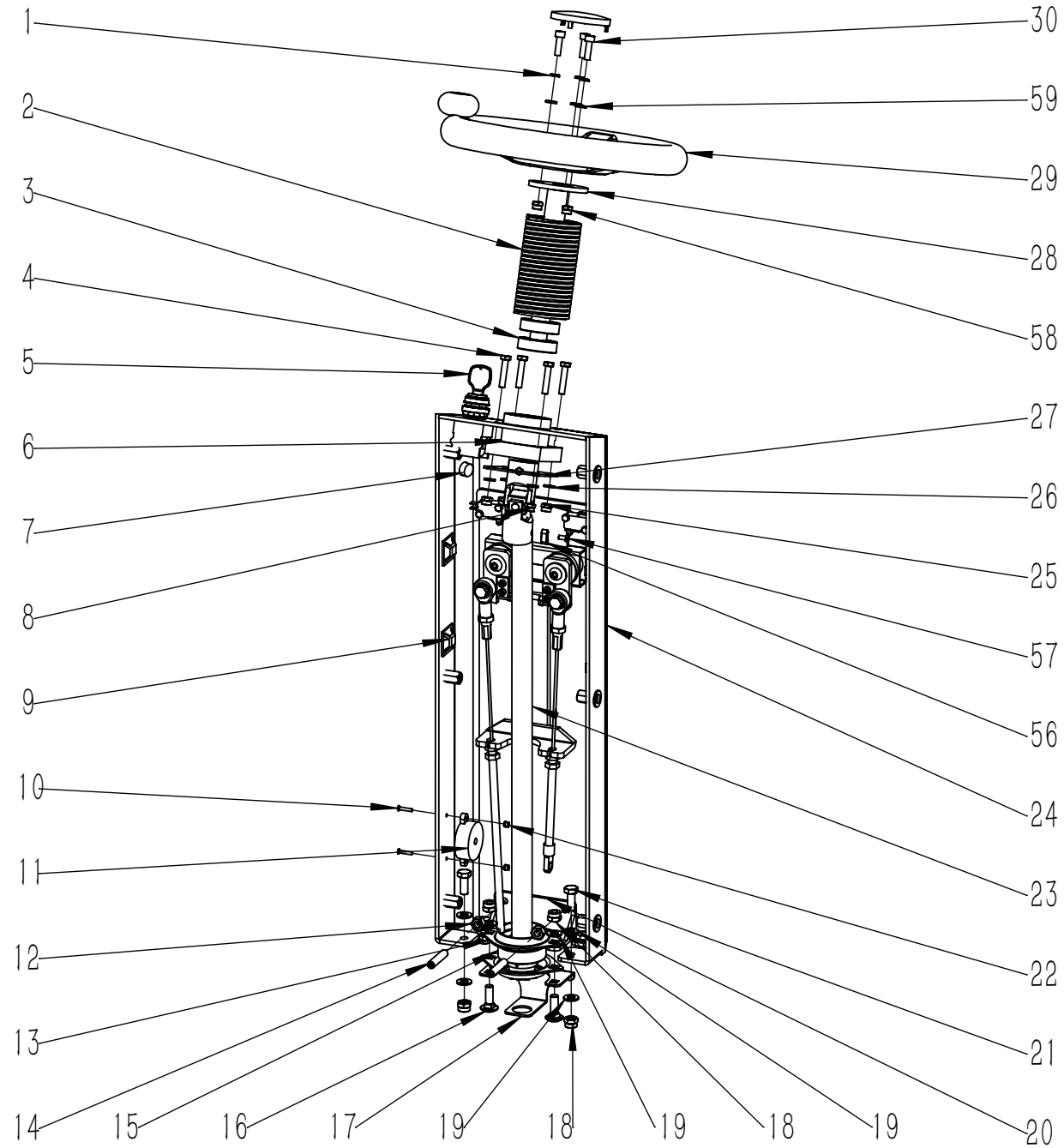
ITEM	P/N	QTY	DESCRIPTION
1	N030028	1	WASHER 8x24x2 A2
2	N020003	1	LOCK NUT M12x1.75 ZINC
3	N030011	1	WASHER 12x24x2.5 ZINC
4	N100003	1	ADJUSTER M8x60
5	N060015	1	COUPLNG M6
6	B070032	2	TENSION SPRING D2.8xD20x86
7	A050071	1	BRACKET ON THE HEAD T90 INTEGRATED SHAFT
8	N010248	1	SHOULDER BOLT D16x70xM12 DACROMET
9	N010247	2	SHOULDER BOLT D8x12xM6 DACROMET
10	B050058	2	WASHER Φ 8.2x Φ 20x2.5
11	N020006	2	LOCK NUT M6 A2
12	N030007	1	WASHER 6x12x1.6 ZINC
13	N040001	1	LOCK WASHER M6 ZINC
14	N010005	1	SCREW M6x16 ZINC
15	N030022	2	WASHER 6x18x1.6 A2
16	A050072	1	BRACKET UNDER BRACKET T90 INTEGRATED SHAFT
17	B070027	1	SPRING Φ 3.5x Φ 30x48



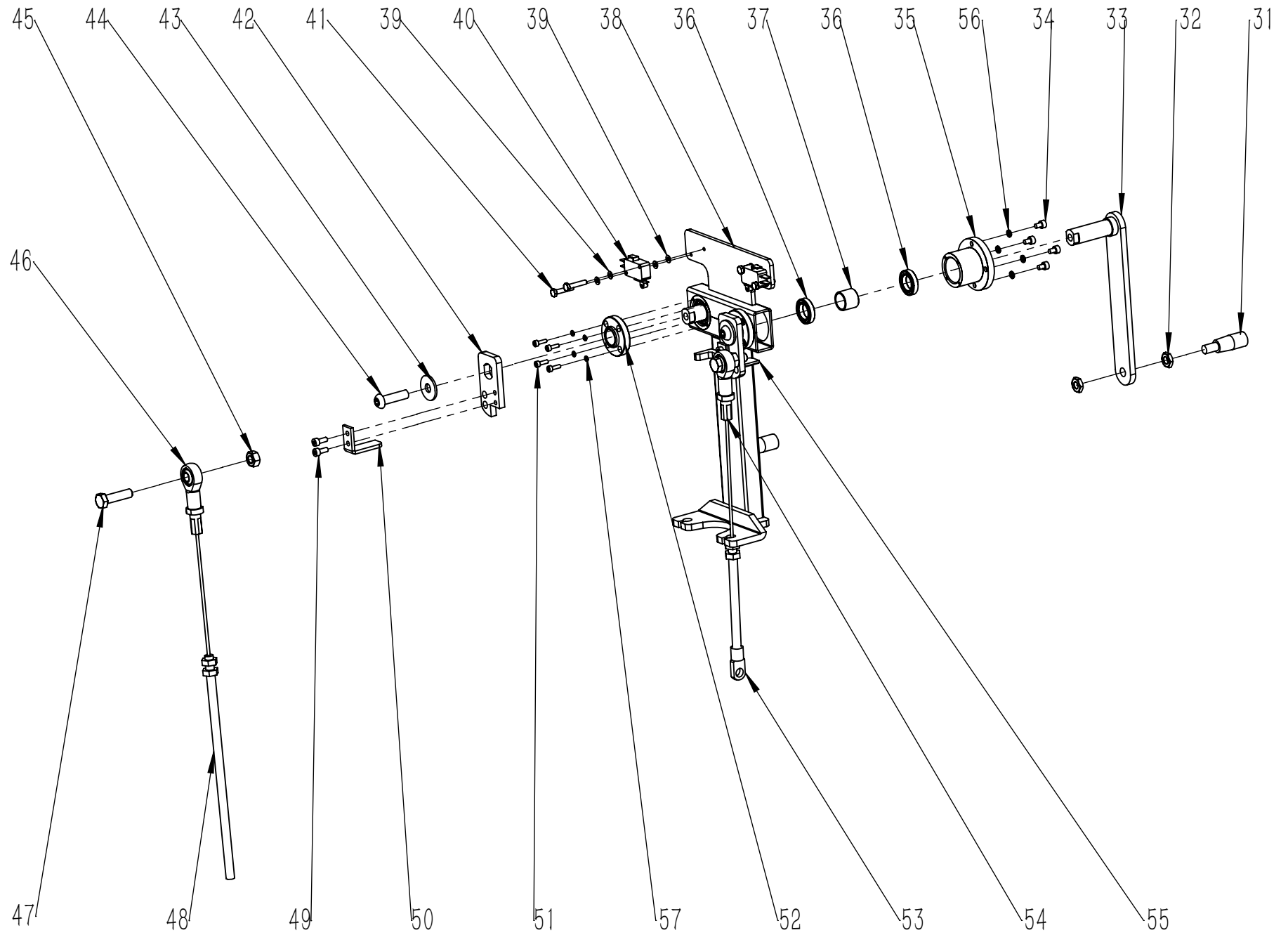
ITEM	P/N	QTY	DESCRIPTION
1	C030062	1	FRONT SQUEEGE BLADE RUBBER 860
2	N010241	2	HANDWHEEL M8X31 860
3	N030010	4	WASHER 8x16x1.6 A2
4	N040017	4	LOCK WASHER M8
5	N010143	4	SCREW M8x16 A2
6	N010144	2	SCREW M8x50 A2
7	N110049	2	WHEEL D100X27 860
8	N010242	2	HANDWHEEL M10X30 860
9	A020050	2	SUPPORT 860
10	N020024	2	LOCK NUT M8 A2
11	N020010	4	NUT M8 A2
12	N010243	2	T-slot SCREW M8X60 860
13	A010189	1	PLATES 860
14	C030063	1	BEAR SQUEEGE BLADE RUBBER 860
15	N110050	2	UNIVERSAL WHEEL D50 860
16	N010244	1	SCREW M8x40 860
17	B050065	1	PLATE 860
18	D010029	1	SQUEEGEE BODY 860



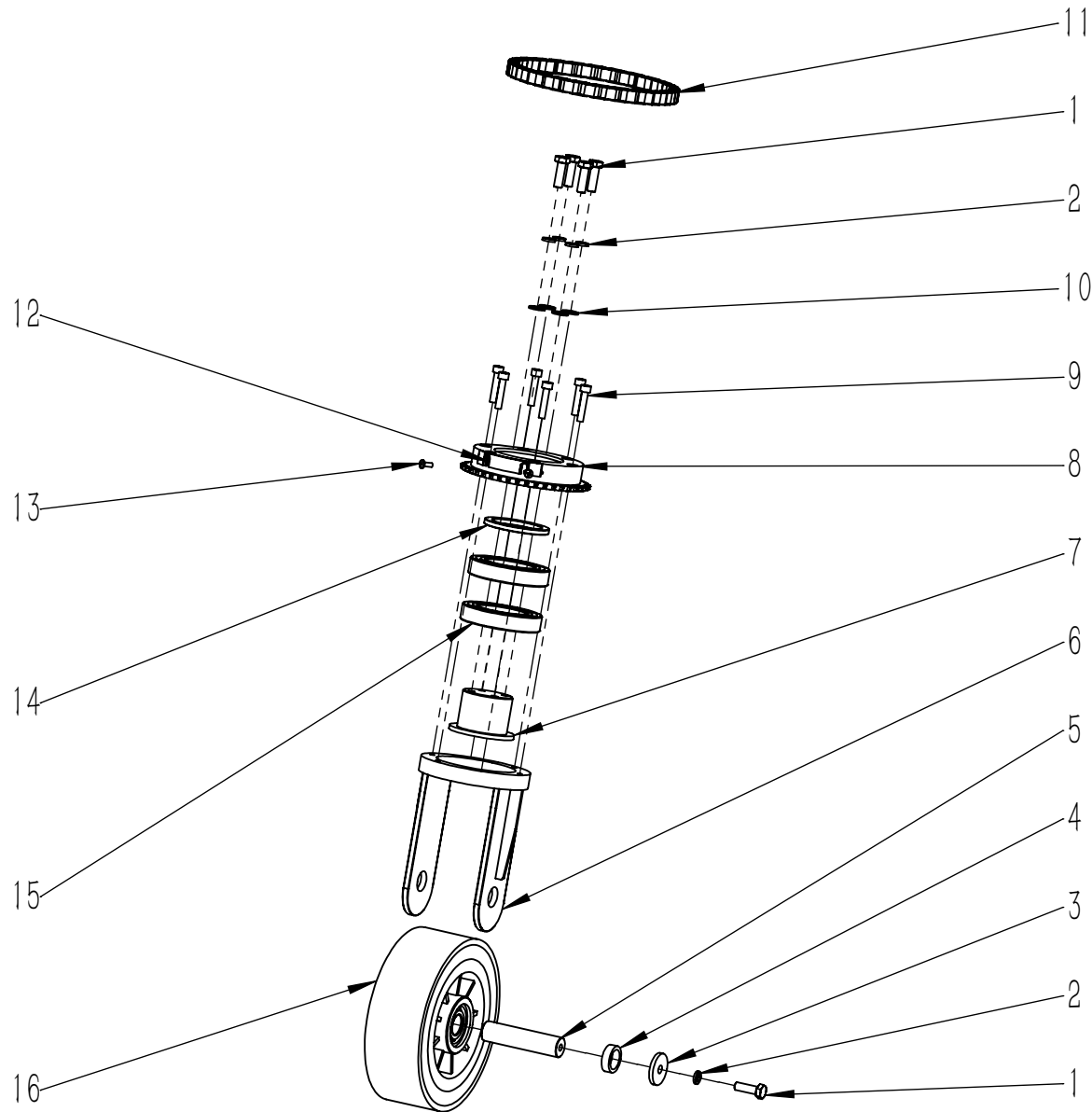
ITEM	P/N	QTY	DESCRIPTION
1	N040011	3	LOCK WASHER M6 A2
2	N090028	1	SPACER ϕ 50x100
3	N070001	2	BEARING 6004
4	N010033	4	SCREW M6x30 ZINC
5	W020013	1	KEY SWITCH ASSEMBLY
6	D010010	1	BEARING SUPPORT Φ 70
7	E020033	1	HORN BUTTON
8	N060014	1	UNIVERSAL JOINT 18x32x85
9	HC10029	4	CABLE TIE HOLDER30x30(AUTOMATIC BONDING)
10	N010170	2	SCREW M3x16 A2
11	E050084	1	BUZZER 24V
12	N020010	2	NUT M8 A2
13	N070004	2	BEARING SUPPORT SBPFL 205
14	N010140	2	SCREW M8x40 A2
15	N070005	1	BEARING SBPFL 205
16	N010014	2	SCREW M8x25 ZINC
17	A020019	1	SUPPORT 40x76
18	N020001	6	LOCK NUT M8 ZINC
19	N030006	10	WASHER 8x16x1.6 ZINC
20	A020020	1	SUPPORT 76
21	N010034	4	SCREW M8x20 ZINC
22	N020045	2	LOCK NUT M3 A2
23	B060089	1	SHAFT 547
24	A020059	1	SUPPORT180 T90 DOUBLE BRUSH
25	N020012	4	LOCK NUT M6 ZINC
26	N030007	4	WASHER 6x12x1.6 ZINC
27	A020021	1	PLAQUE 64x64
28	A020022	1	SHAFT Φ 20
29	N110035	1	STEERING WHEEL BOOSTER BALL T90
30	N010057	3	SCREW M6x20 A2



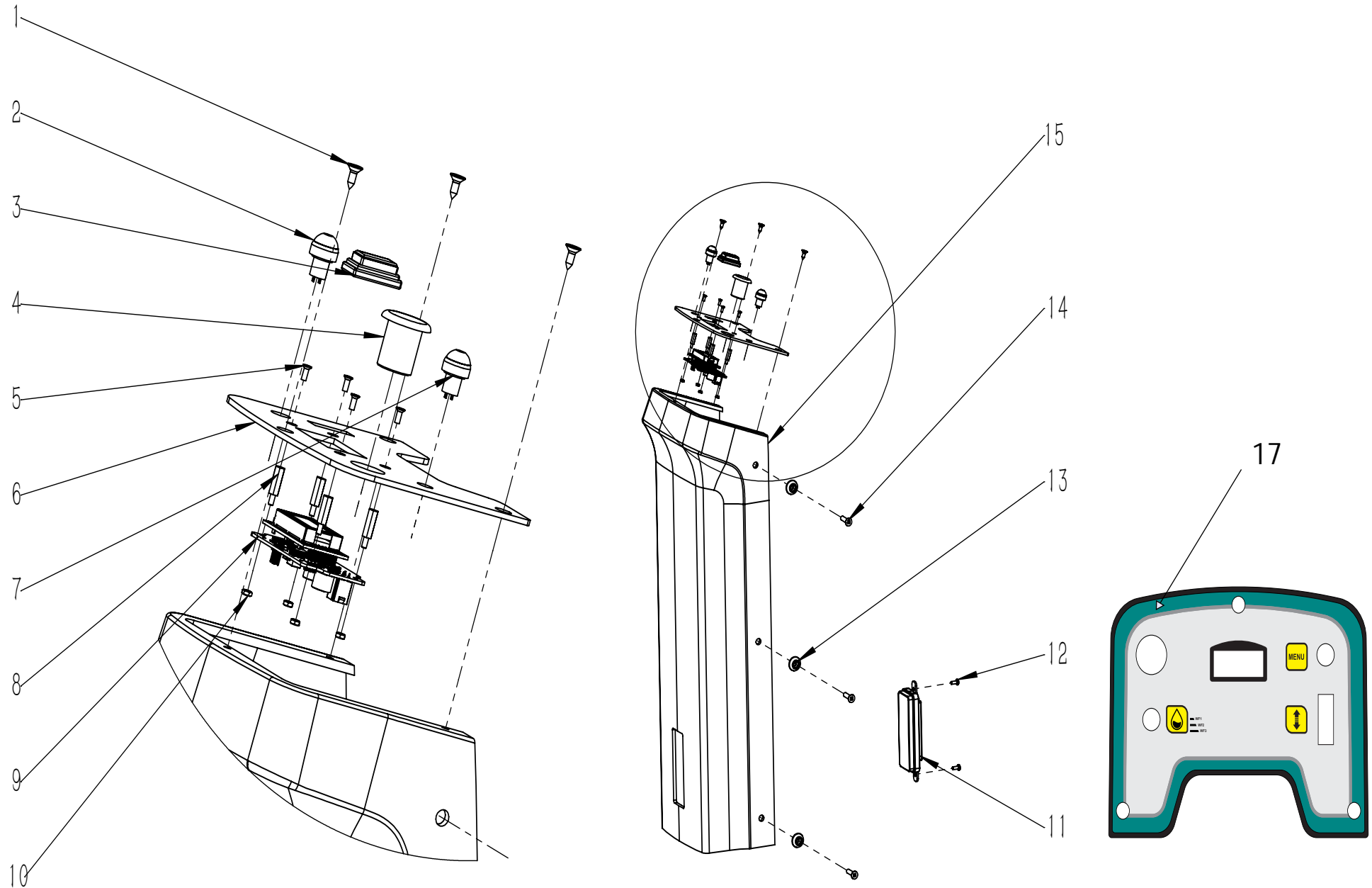
ITEM	P/N	QTY	DESCRIPTION
56	N060016	2	FLAT KEY 6x6x16
57	N010184	2	SCREW M6x8 (BLACKENING)
58	N020006	3	LOCK NUT M6 A2
59	N030024	3	WASHER 6x12x1.6 A2



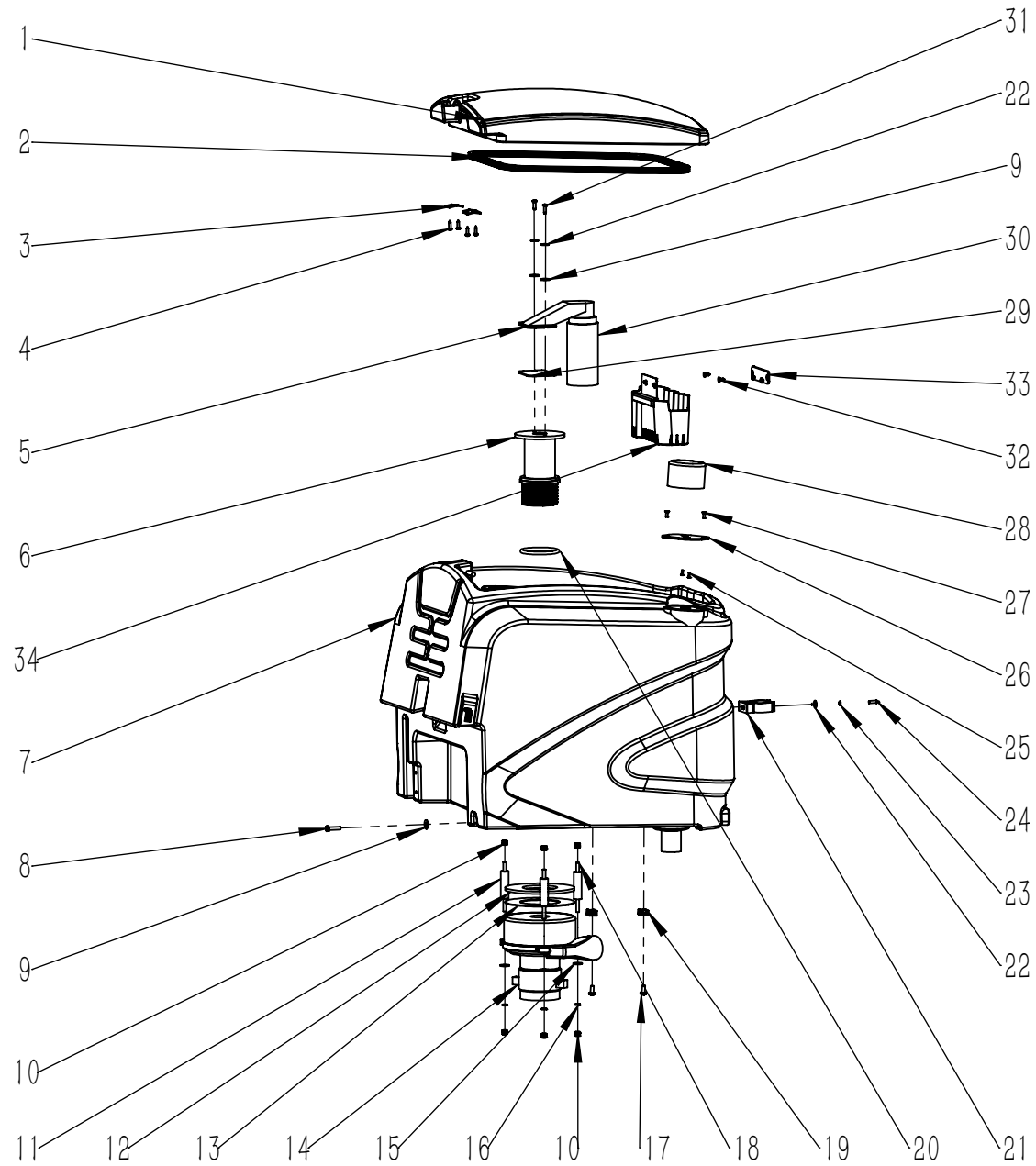
ITEM	P/N	QTY	DESCRIPTION
31	N100030	2	HANDWHEEL M8
32	N020048	4	NUT M8 A2
33	A020033	2	ROCKER ARM T90
34	N010187	8	SCREW M4x6 A2
35	B060143	2	BEARING BLOCK
36	N070021	4	BEARING 61802 (24x15x5)
37	B010053	2	AXLE SLEEVE 17.5x15.1x15
38	A020015	1	SUPPORT
39	N030019	8	WASHER 3x7x0.5 A2
40	E020030	2	MICROSWITCH 250V 16A NORMALLY SWITCH OFF
41	N010027	4	SCREW M3x20 A2
42	A020017	2	LEVER 61x30
43	N030028	2	WASHER 8x24x2 A2
44	N010059	2	SCREW M8x20 A2
45	N020018	2	NUT M8 ZINC
46	N070016	2	FISHEYE JOINT BEARING
47	N010002	2	SCREW M8x30 ZINC
48	B060167	1	CABLE 725
49	N010199	4	SCREW M4x10 A2
50	A050073	1	L-SHAPED POSITIONING PIECE LEFT T150
51	N010186	8	SCREW M3x16 A2
52	B060144	2	BEARING PLATE
53	N060015	1	COUPLNG M6
54	B060079A	1	CABLE T90
55	A050076	1	L-SHAPED POSITIONING PIECE RIGHT T150
56	N040019	8	LOCK WASHER M4 A2
57	N040024	8	LOCK WASHER M3 A2



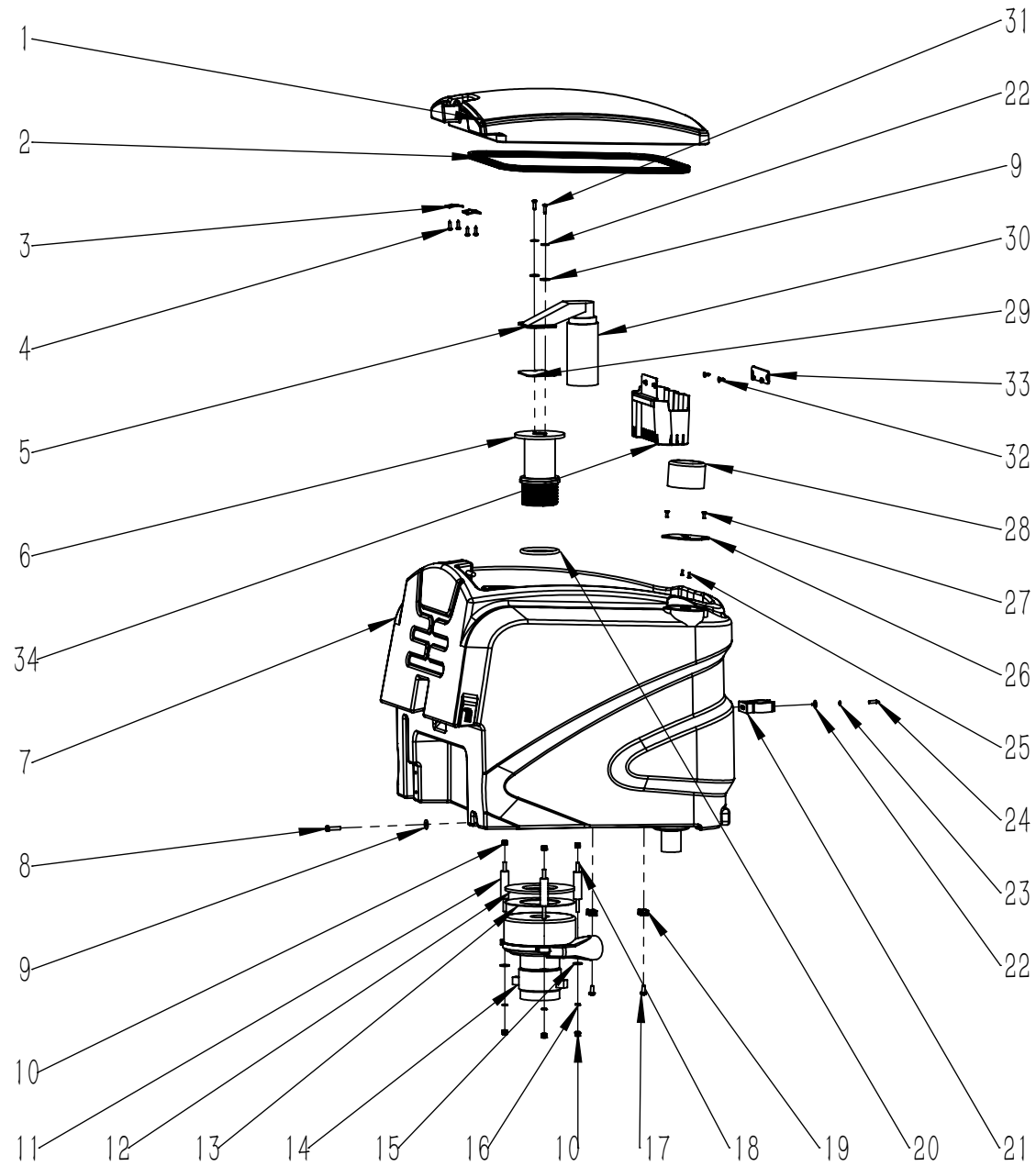
ITEM	P/N	QTY	DESCRIPTION
1	N010094	6	SCREW M8x25 A2
2	N040017	6	LOCK WASHER M8
3	B060069	2	WASHER 8.5x30x4 ZINC
4	B060087	2	SPACER 20x27x8
5	B060071	1	SHAFT 20x83.5
6	A030055	1	SUPPORT 73.5 T90 RISE 20mm
7	B060085	1	SHAFT ϕ 50
8	B060086	1	TRANSMISSION CHAIN GEAR ϕ 130
9	N010139	6	SCREW M6x30 ZINC
10	N030010	4	WASHER 8x16x1.6 A2
11	N100019	1	CHAIN 06B-25/49
12	B050018	1	CAM ϕ 110x13
13	N010070	2	SCREW M4x10 A2
14	B060068	1	WASHER 50x65x5
15	N070006	2	BEARING 6010
16	N110015	1	WHEEL ϕ 175x60



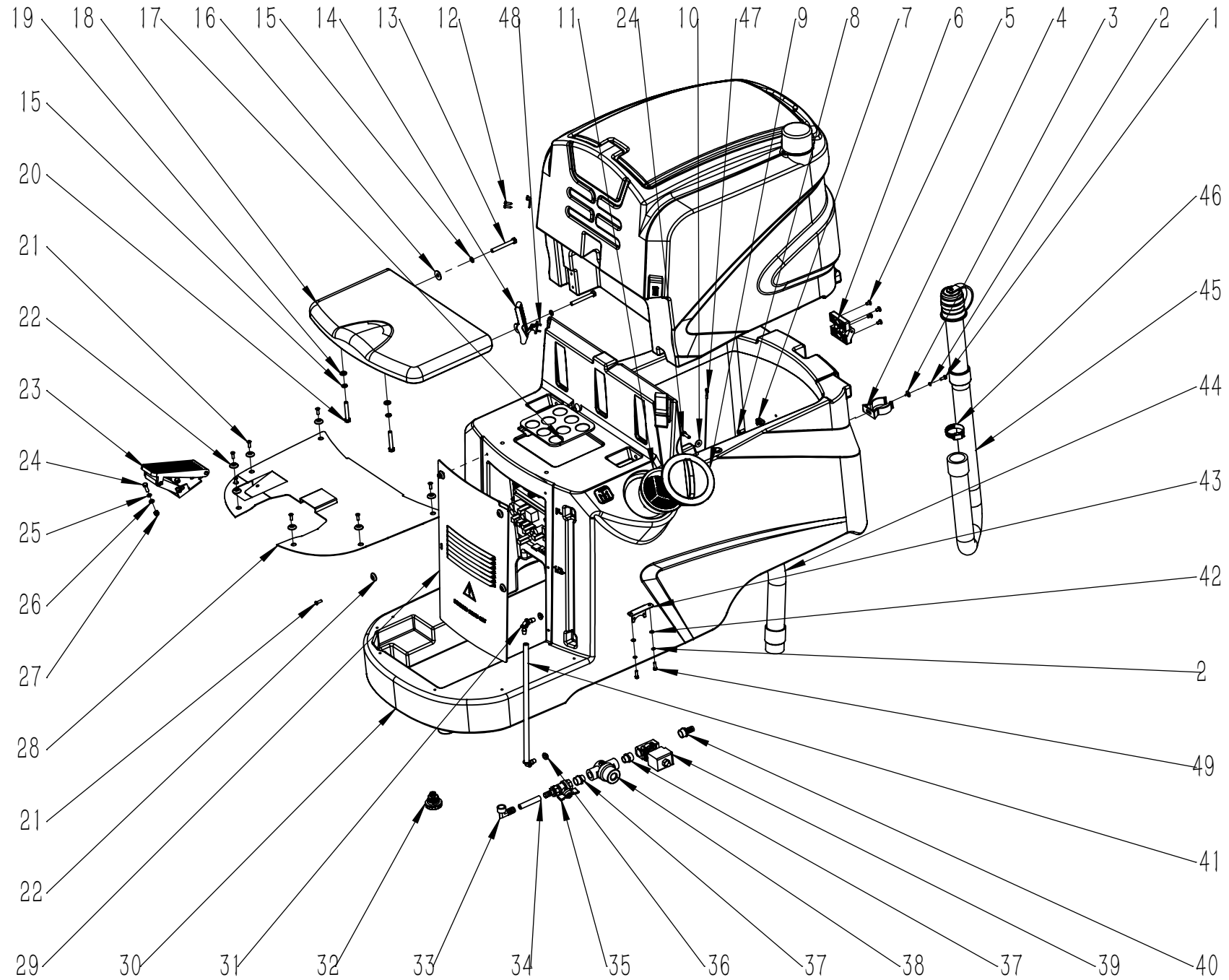
ITEM	P/N	QTY	DESCRIPTION
1	N010339	3	SELF TAPPING SCREW M4.2x9.5 A2
2	E020001	1	BUTTON
3	E020027	1	FORWARD/BACKWARD SWITCH
4	E020028	1	EMERGENCY STOP SWITCH 220V 10A
5	N010103	4	SCREW M3x8 A2
6	A020058	1	INTEGRATED CONTROL PANEL T90 DOUBLE BRUSH
7	E020020	1	BUTTON (YELLOW)
8	B020040	4	NYLON STUD M3x15+6
9	E040128	1	TWO-SIDED PANEL KDS
10	B060165	4	NYLON NUT M3
11	E050112	1	HEADLIGHT 24V (115x44x22)
12	N010070	2	SCREW M4x10 A2
13	C020028	6	WASHER Ø5
14	N010233	6	SCREW M6x25 BLACK ZINC PLATING
15	C010021	1	COVER T90
16	W020133	1	WIRE HARNESS T90 DOUBLE BRUSH
17	C040316	1	CONTROL PANEL LABEL TS1300 T90 WITH WATER CONTROL SWITCH



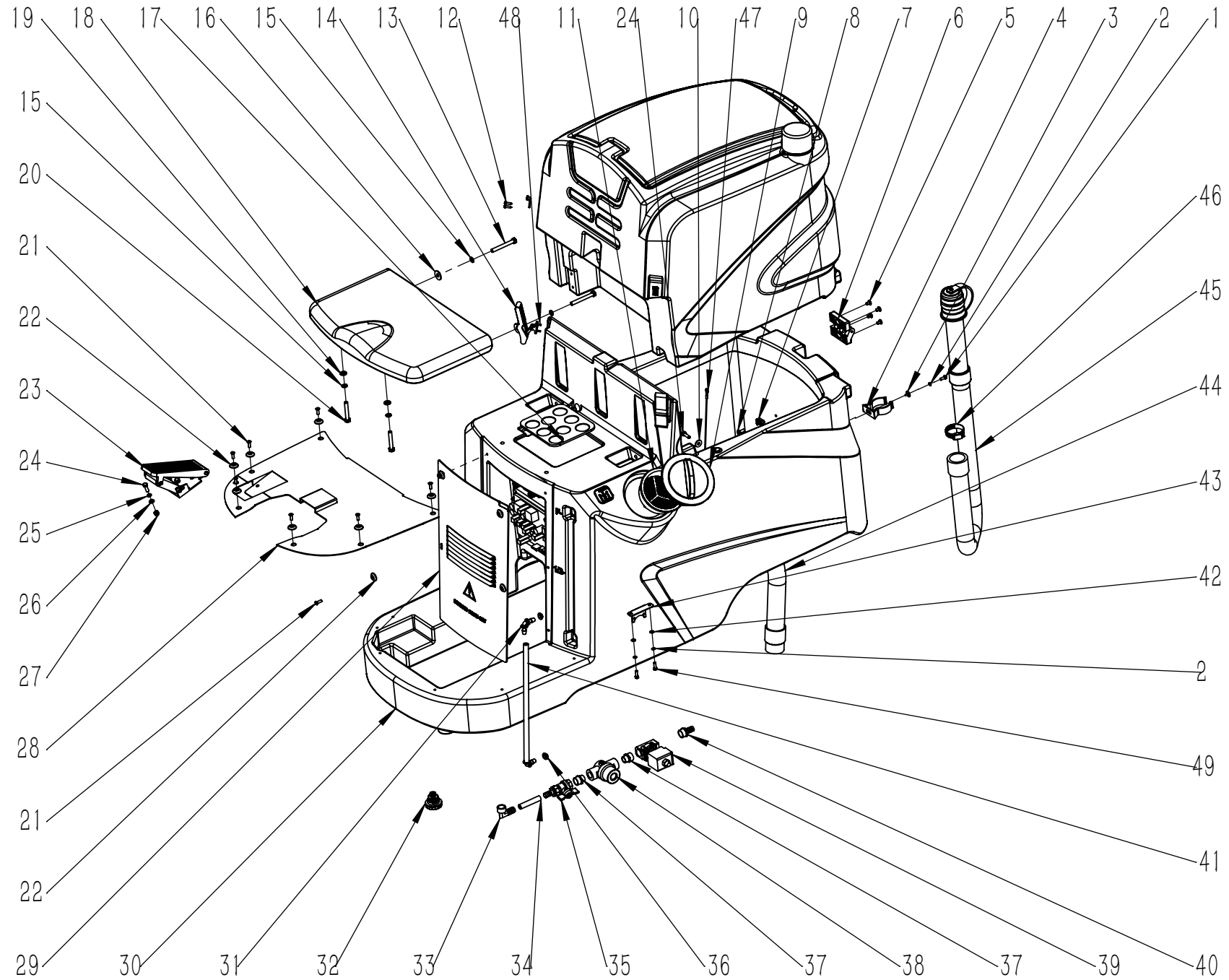
ITEM	P/N	QTY	DESCRIPTION
1	C010003	1	RECOVERY TANK COVER
2	N090010.1	1	RUBBER SEAL STRIP L=1280
3	A010001	2	PLAQUE 34x30
4	N010052	4	SELF TAPPING SCREW M4.2x16 A2
5	C020049	1	SUCTION BODY T35
6	C020283	1	FLOAT MOUNT
7	C010020	1	RECOVERY TANK T90
8	N010106	1	SCREW M6x25 A2
9	N030022	3	WASHER 6x18x1.6 A2
10	N020012	6	LOCK NUT M6 ZINC
11	B050029	3	SLEEVING 55
12	F040001	1	SPONGE Φ 140x5
13	F040005	1	3M ADHESIVES GUM ϕ (140-70)
14	E040001	1	VACUUM MOTOR 24V 390W 130805-13
15	N030008	3	WASHER 6x18x1.6 ZINC
16	N040001	3	LOCK WASHER M6 ZINC
17	N010112	2	SCREW M5x16 A2
18	N100008	3	SCREW M6x100mm
19	N090002	2	SUPPORT 23x1
20	N090042	1	O RING Φ 67x Φ 6
21	C020265	1	REINFORCED TUBE SUPPORT D43
22	N030040	3	WASHER 5x15x1.2
23	N040023	1	LOCK WASHER M5
24	N010029	1	SCREW M5x16 A2
25	N010150	2	SCREW M3x10 A2
26	A030085	1	LAMPSHADE CONNECTING BOARD T90
27	N010299	2	SCREW M4x12 A2 BLACK
28	E050113	1	WARNING LAMP ϕ 73 (T90)
29	C030040	1	SUCTION GASKET T35



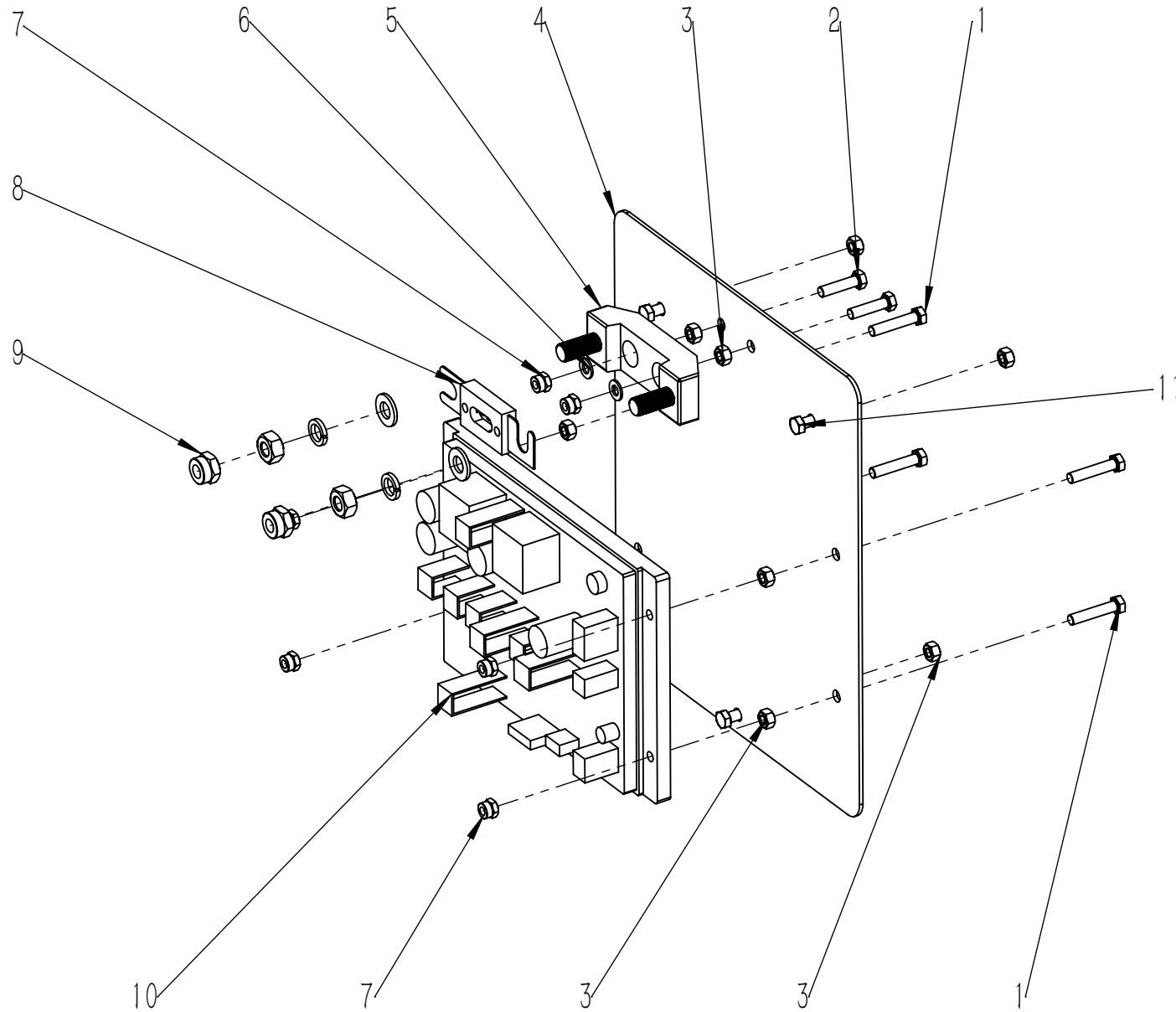
ITEM	P/N	QTY	DESCRIPTION
30	F040010	1	SUCTION FLOATER T35
31	N010251	2	SCREW ST4.8x16 A2
32	N010097	2	SELF TAPPING SCREW M4.2x13 A2
33	A040107	1	FILTER BASKET HOLDER
34	C020087	1	PRIMARY FILTER T130



ITEM	P/N	QTY	DESCRIPTION
1	N010208	1	SCREW M5x12 A2
2	N040023	3	LOCK WASHER M5
3	N030040	1	WASHER 5x15x1.2
4	C020265	1	REINFORCED TUBE SUPPORT D43
5	N010220	8	SCREW M6x20 A2 BLACK
6	C020011	2	HINGE 40x14
7	N090002	10	SUPPORT 23x1
8	N010112	10	SCREW M5x16 A2
9	C020005	1	THREADED COVER Φ 115
10	N030022	1	WASHER 6x18x1.6 A2
11	C020006	1	FILTER Φ 110
12	N010098	4	SELF TAPPING SCREW M4.2x9.5 A2
13	N010136	2	SCREW M8x65 ZINC
14	N090004	2	RUBBER HASP 50
15	N040013	4	LOCK WASHER M8 ZINC
16	N030027	2	WASHER 8x24x2 ZINC
17	E020007	1	PRESSURE SWITCH 150x135x5 N.O.
18	C010022	1	SEAT T90
19	N030006	2	WASHER 8x16x1.6 ZINC
20	N010010	2	SCREW M8x50 ZINC
21	N010230	11	SCREW M5x16 BLACK ZINC PLATING
22	C020028	11	WASHER Φ 5
23	E020014	1	PEDAL JK5
24	N010013	3	SCREW M6x20 A2
25	N040011	2	LOCK WASHER M6 A2
26	N030024	2	WASHER 6x12x1.6 A2
27	N020006	2	LOCK NUT M6 A2
28	A050048	1	BOTTOM PLATE T90
29	C020034	1	COVER T90
30	C010114	1	SOLUTION TANK T90 DOUBLE BRUSH



ITEM	P/N	QTY	DESCRIPTION
31	F020001	2	CONNECTOR $\Phi(8-6)\times 30$
32	W020001	1	PLUG ASSEMBLY 3/4"
33	F020022	1	CONNECTOR 1/2 D=10 d=8
34	F050088.13	1	SILICONE HOSE D=12 d=8 L=60
35	F010006	1	BALL VALVE 1/2 CONNECTION STRAIGHT D=10
36	C030013	2	GASKET $\Phi 8$
37	F020019	2	CONNECTOR 1/2-3/8 A2
38	F010004	1	FILTER 3/8
39	W020005	1	SOLENOID VALVE ASSEMBLY T55/70BT
40	F020002	1	CONNECTOR 1/2
41	F050042.3	1	WATER LEVEL TUBE T130
42	N030016	2	WASHER 5x10x1
43	A060034	1	SOLENOID VALVE SUPPORT T90
44	F060017	1	SUCTION HOSE $\Phi 38\times 1000$
45	F060027	1	DRAINAGE PIPE T90
46	F050006	1	SCREW CLAMP $\Phi 33-57$
47	B060097	1	CABLE L=510
48	N010137	4	SCREW M3x10 A2
49	N010029	2	SCREW M5x16 A2



ITEM	P/N	QTY	DESCRIPTION
1	N010165	4	SCREW M5x25 A2
2	N010135	2	SCREW M5x20 A2
3	N020046	9	NUT M5 A2
4	A030039	1	CIRCUIT BOARD SUPPORT 230x30
5	E050004	1	FUSE HOLDER 80A
6	N030016	2	WASHER 5x10x1
7	N020037	6	LOCK NUT M5 A2
8	E050005	1	FUSE 80A
9	N020001	2	LOCK NUT M8 ZINC
10	E040126	1	CONTROLLER 5V-INTEGRATED VOLTAGE REDUCTION
11	N010029	3	SCREW M5x16 A2

ITEM	P/N	QTY	DESCRIPTION
1	C040015	1	DECAL T90
2	C040035	1	BRUSH UP AND DOWN DECAL GREEN
3	C040036	1	SQUEEGEE UP AND DOWN DECAL GREEN
4	M010011	1	CARTON BOX 1440x760x1200
5	N090031	2	KEYCHAIN
6	P010004	1	WARRANTY CARD
7	P010012	1	TEST REPORT
8	C040003	1	LEFT LABEL T45/T55/T70/90
9	C040004	1	RIGHT LABEL T45/T55/T70/90
10	M020021	1	T70/90 RAMP 600x400x20
11	C040316	1	CONTROL PANEL LABEL TS1300 T90 WITH WATER CONTROL SWITCH
12	C030076	2	RUBBER SKIRT 512x85
13	M010015	1	PLASTIC PACKAGE BAG 1400x700x1000
14	M020008	4	TRIANGLE BLOCK 50x50x100
15	M020038	1	WOOD PALLET 1440x780x120 T90 DOUBLE MOTOR
16	HC10015	2	NYLON BRAIDED TAPE LONG 545x35
17	M010129	1	CARTON BOX COVER 1460x820x100 T90 DOUBLE MOTOR
18	M010014	1	PLASTIC PACKAGE BAG 340x240mm
19	M020007	12	ANGLE BEAD 50x50x100
20	M020028	4	BATTEN DOUBLE BRUSH T90 40x40x1180
21	M020024	2	TRIANGLE BLOCK 50x50x70
22	HC10005	20	P NAIL
23	HC10017	12	SEALING BOX NAIL 35mmx18mm
24	N010160	8	SELF TAPPING SCREW ST4x40 BLACK ZINC
25	M010130	1	SQUEEGEE CARTON BOX 860 880x225x135
26	N030040	4	WASHER 5x15x1.2
27	HC10016	2	NYLON BRAIDED TAPEN SHORT 175x35

ITEM	P/N	QTY	DESCRIPTION
28	N010159	8	SELF TAPPING SCREW ST4x25 BLACK ZINC
29	C040322	1	ELECTRICAL BAFFLE LABEL T90