

ProForce Armor Gloves

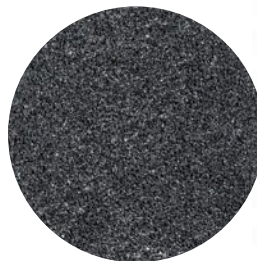
HPPE Cut-Resistant, Anti-Impact Shell with Black Nitrile Coating

Premium level hand protection. High performance HPPE ANSI A3 cut-resistant gloves designed for protection of hands from cuts, scratches and abrasions, which are the number one cause of job site injuries.

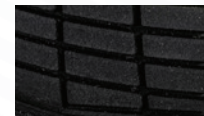
Work applications include demolition, restoration work, construction, cutting applications, sheet metal work, and handling of sharp-edged material and waste.

Features

- 13-gauge gray speckled high-performance HPPE shell for protection and greater cut resistance up to the wrist
- Anti-impact Thermo Plastic Rubber (TPR) molded back of the hand, knuckles, and fingers for excellent protection while still offering high dexterity and cut resistance
- ANSI A3 cut level protection
- Textured nitrile coated palm for abrasion and cut resistance
- Knitted wrist protects against dirt and debris entering the glove
- Excellent grip performance in oily, wet, or dry applications
- Color coded for easy size identification
- Seamless construction offers superior breathability, comfort and fit throughout the work day
- Tear resistant
- Washable



Palm Detail



Back-of-Hand Detail



Wrist Detail

ProForce Armor Gloves

Item	Size
2611-0155	Small
2613-0157	Medium
2614-0158	Large

Item	Size
2615-0159	X-Large
2616-0150	2X-Large

